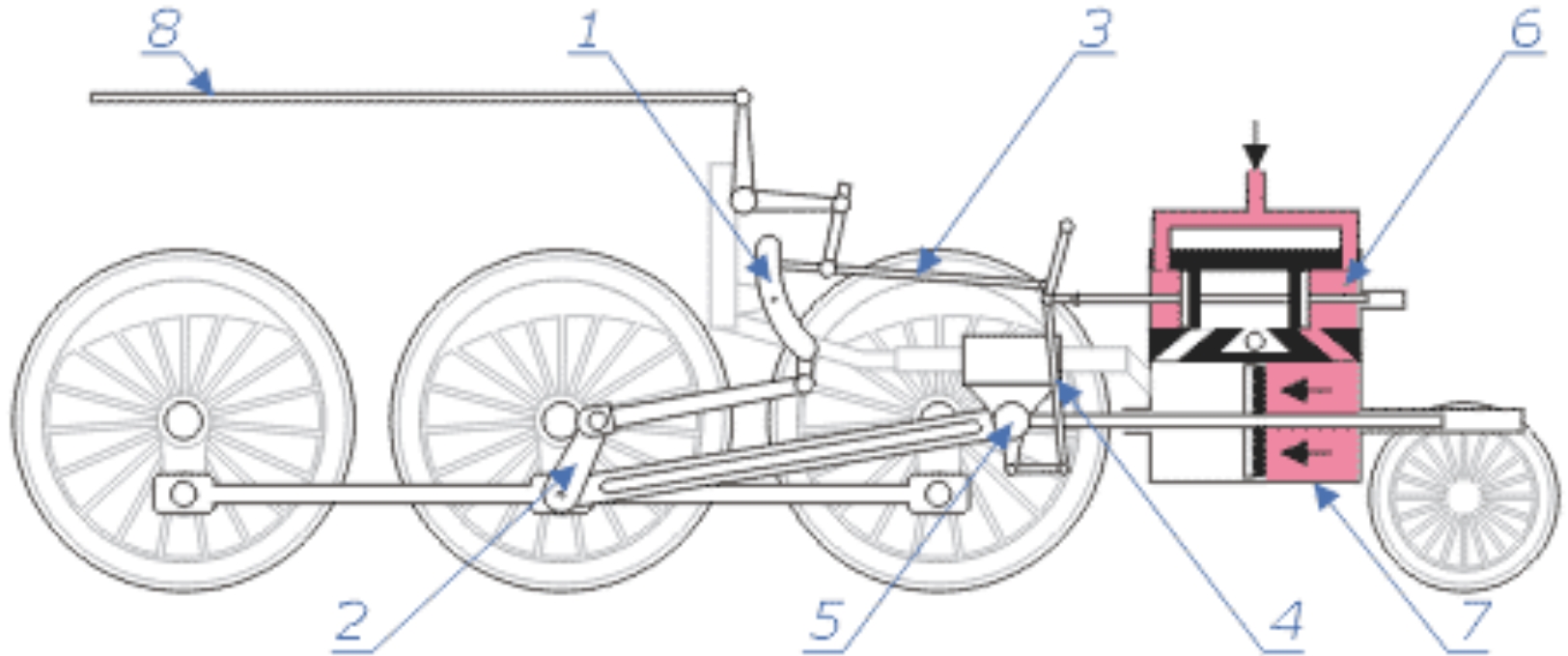


Lecture 7

GEOS24705

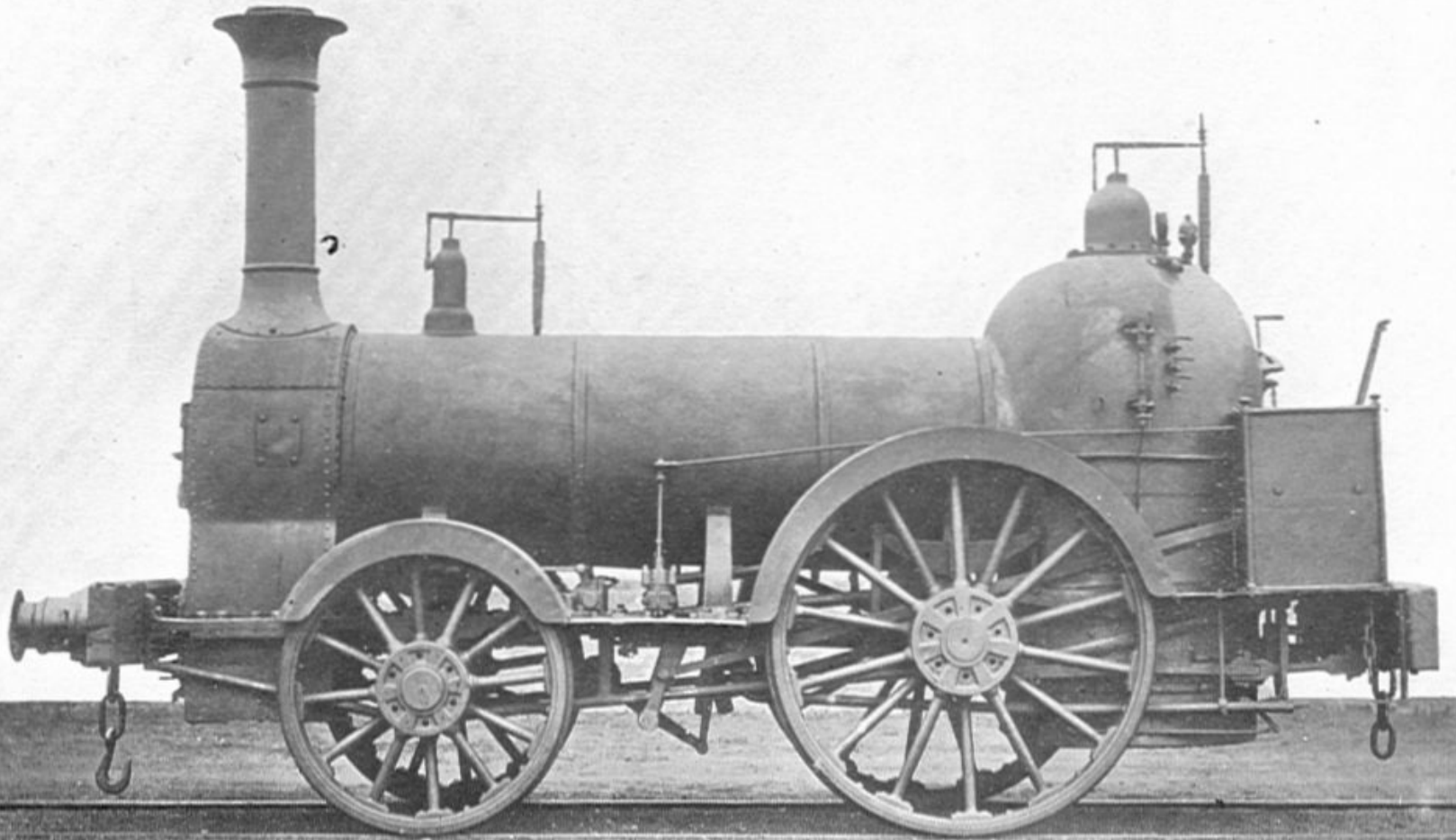
Heat engines II

Double-action steam engine
(2-3-0 wheel arrangement)



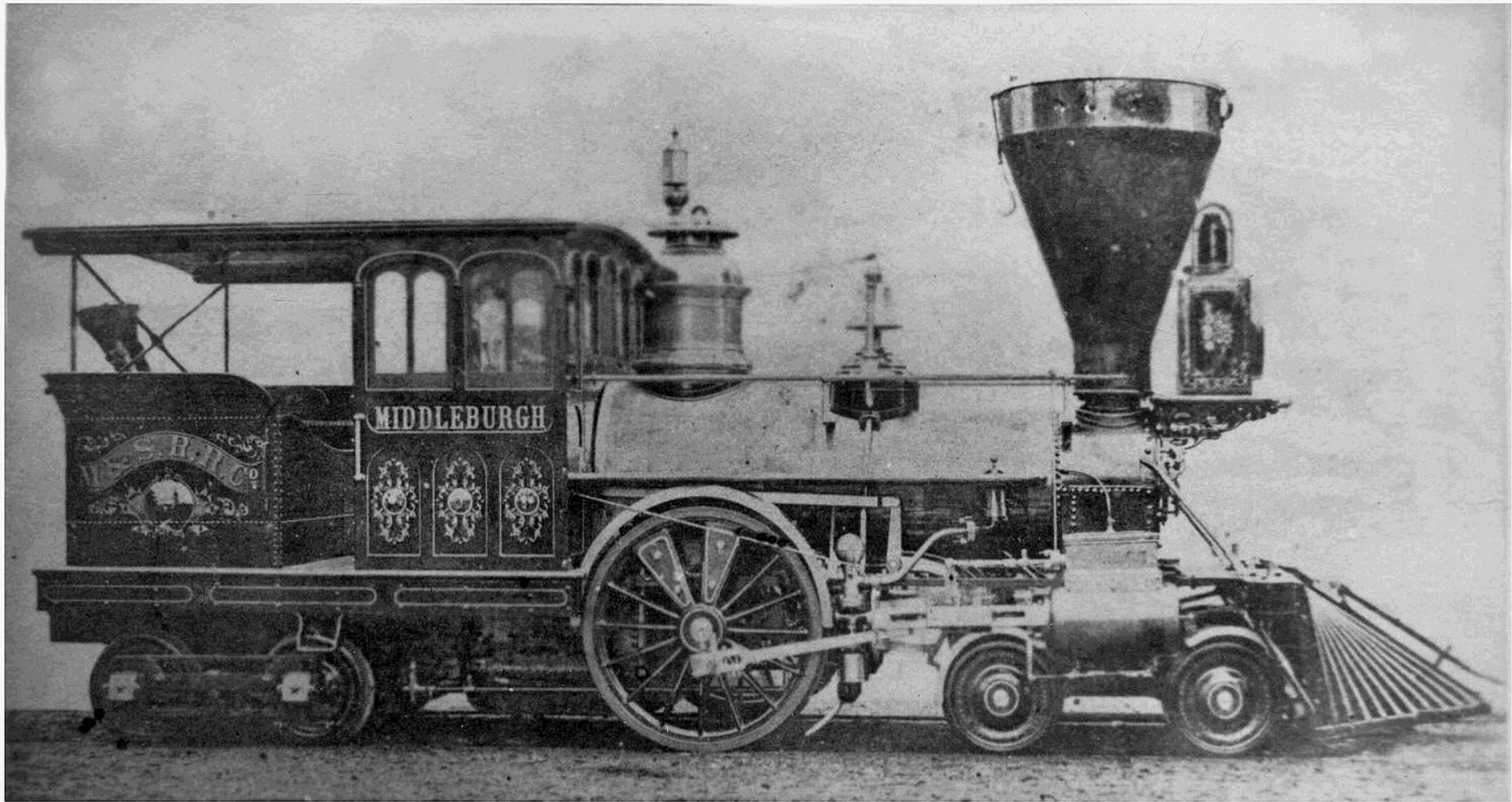
primary use: *transportation*

What period is this locomotive from?



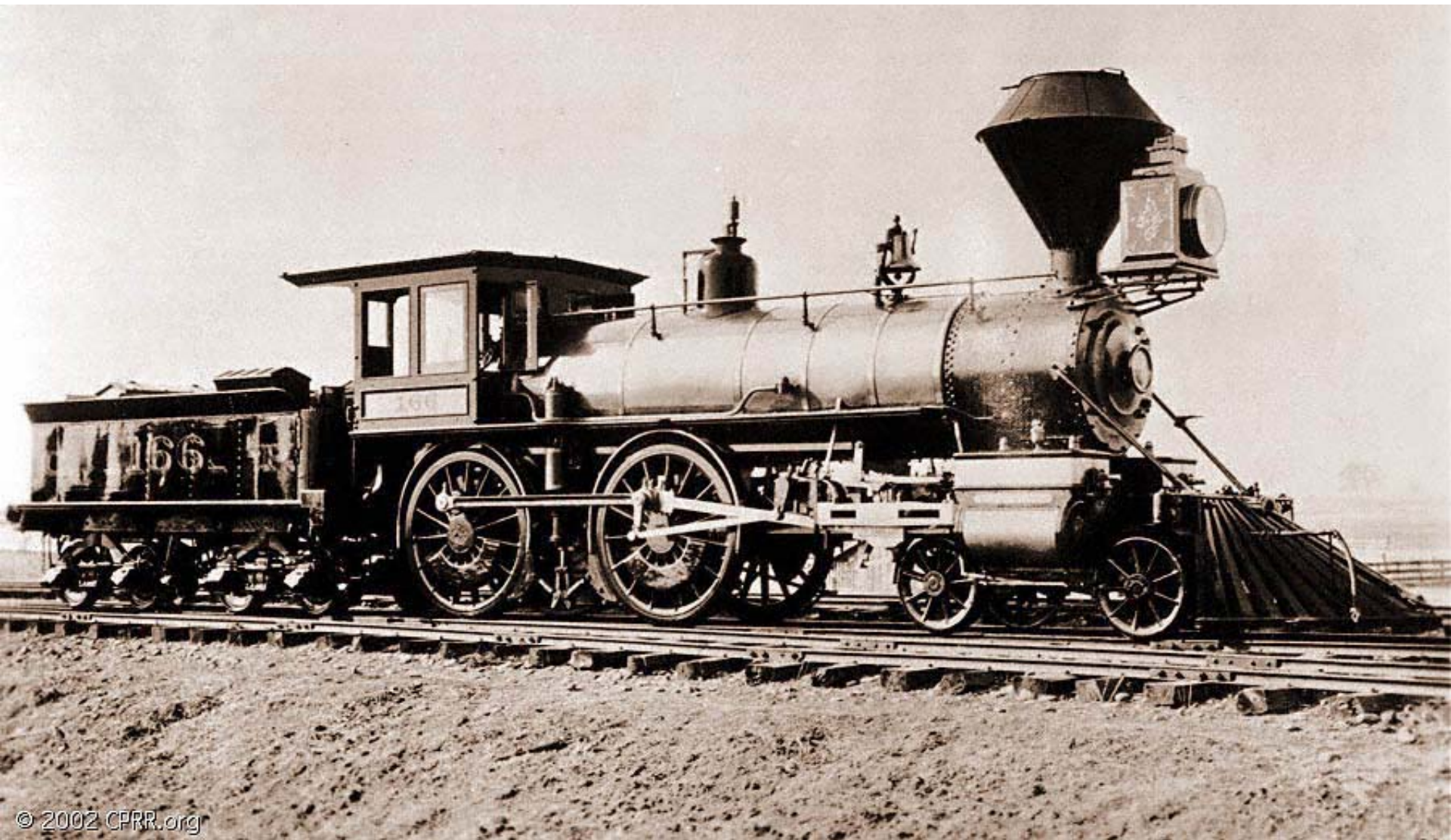
1846 London & Birmingham locomotive

What period is this locomotive from?

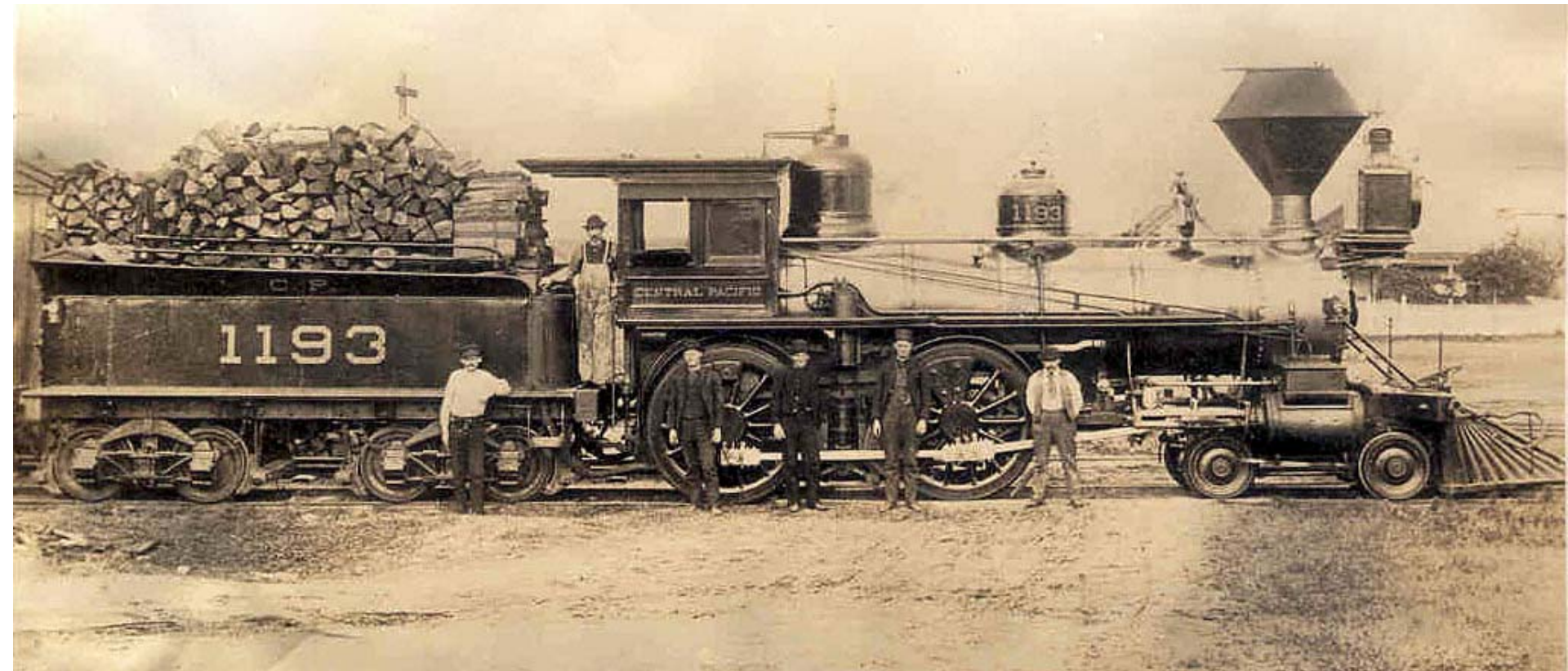


1855 "Pony" locomotive

What period is this locomotive from? What country?



What period is this locomotive from? What country?



What event is this picture showing?



“golden spike”, Promontory Summit, 1869
transcontinental railway connection

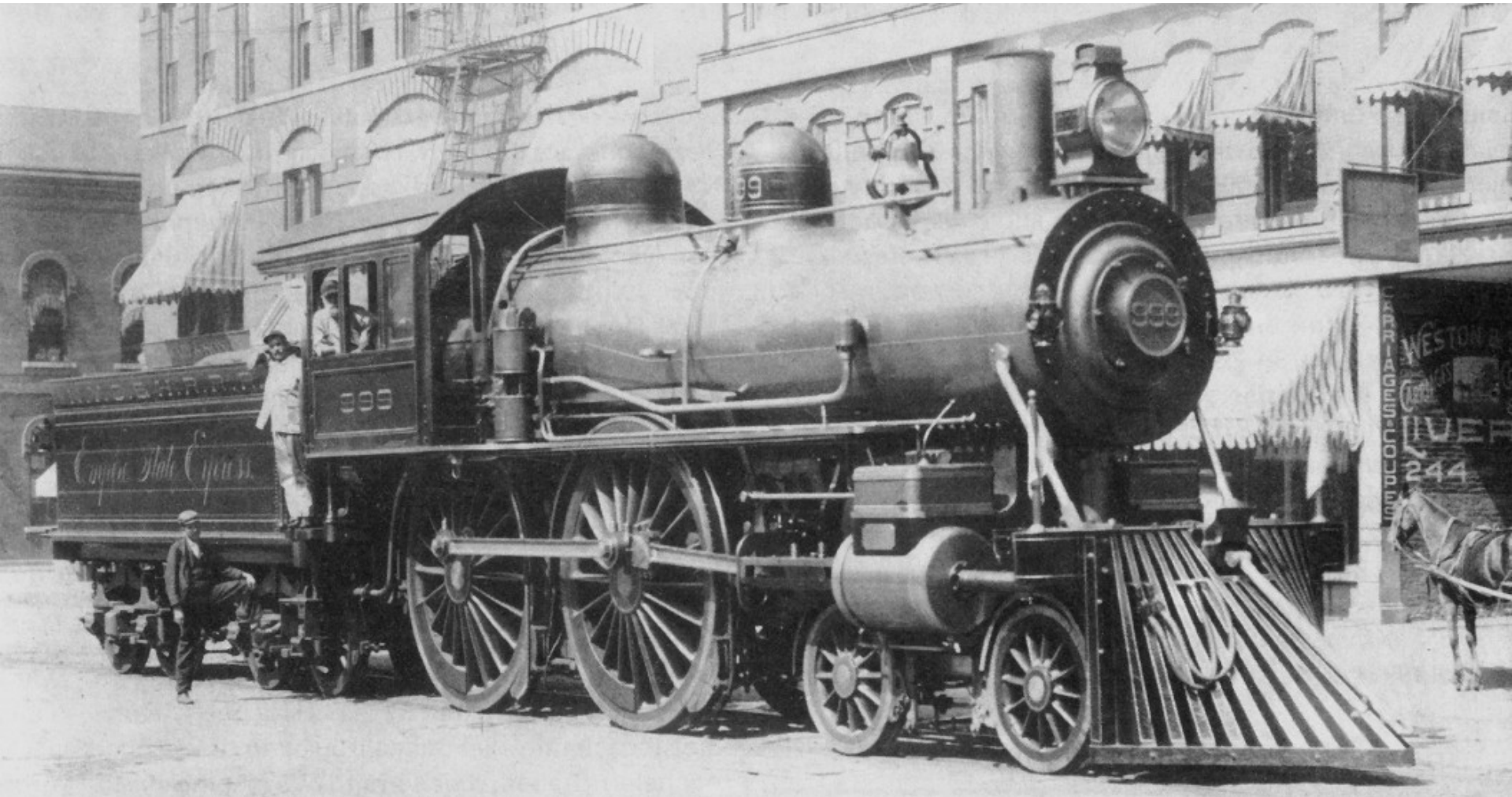
1885 map of railways in U.S. West: 50 years from invention to dominance

known over the Pacific coast, is not only the best but the splendid lines takes him in less than twenty-four hours to average for the entire distance of 106 feet to the mile,



Central Pacific R.R.
and Leased Lines
Southern Pacific R.R.
AND CONNECTIONS

What period is this locomotive from?



A modern picture of the same locomotive



Even locomotives don't run at maximum power

